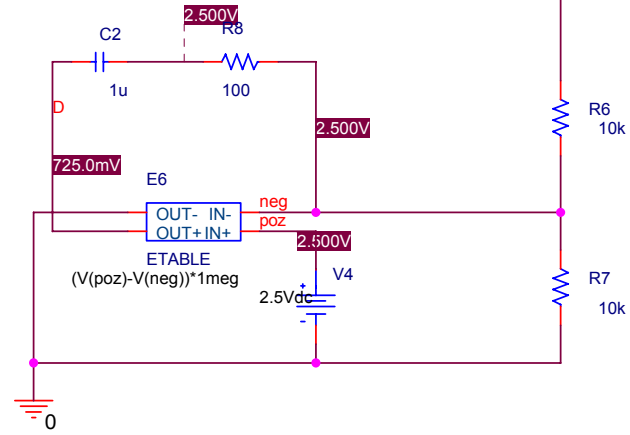


PARAMETERS:

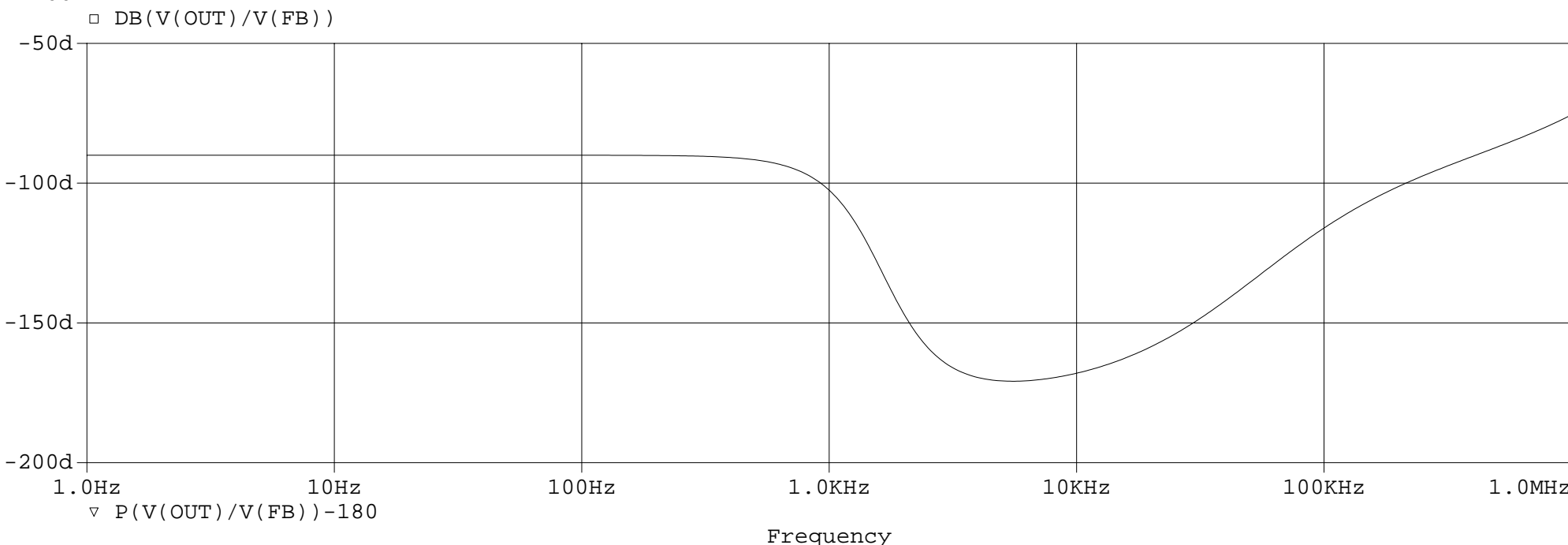
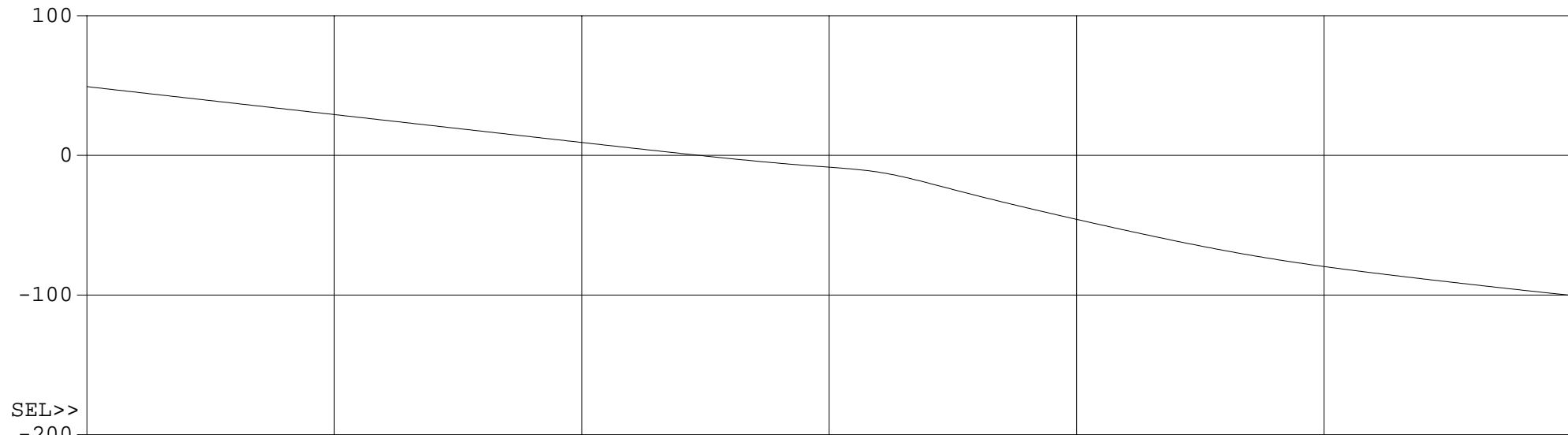
$L_{buck} = 100\mu$
 $C_{out} = 100\mu$
 $R_{esr} = 30m$
 $R_{load} = 1$
 $V_{in} = 20$
 $R_L = 0.1$



Title		
Buck converter average model		
Size	Document Number	Rev
A4	Mor M. Peretz - DCDC_04	<Rev Code>
Date:	Tuesday, December 07, 2004	Sheet 1 of 1

Title		
<Title>		
Size	Document Number	Rev
A4	<Doc>	<Rev Code>
Date:	Tuesday, December 07, 2004	Sheet 1 of 1

(D) buck-SCHEMATIC1-AC.dat (active)

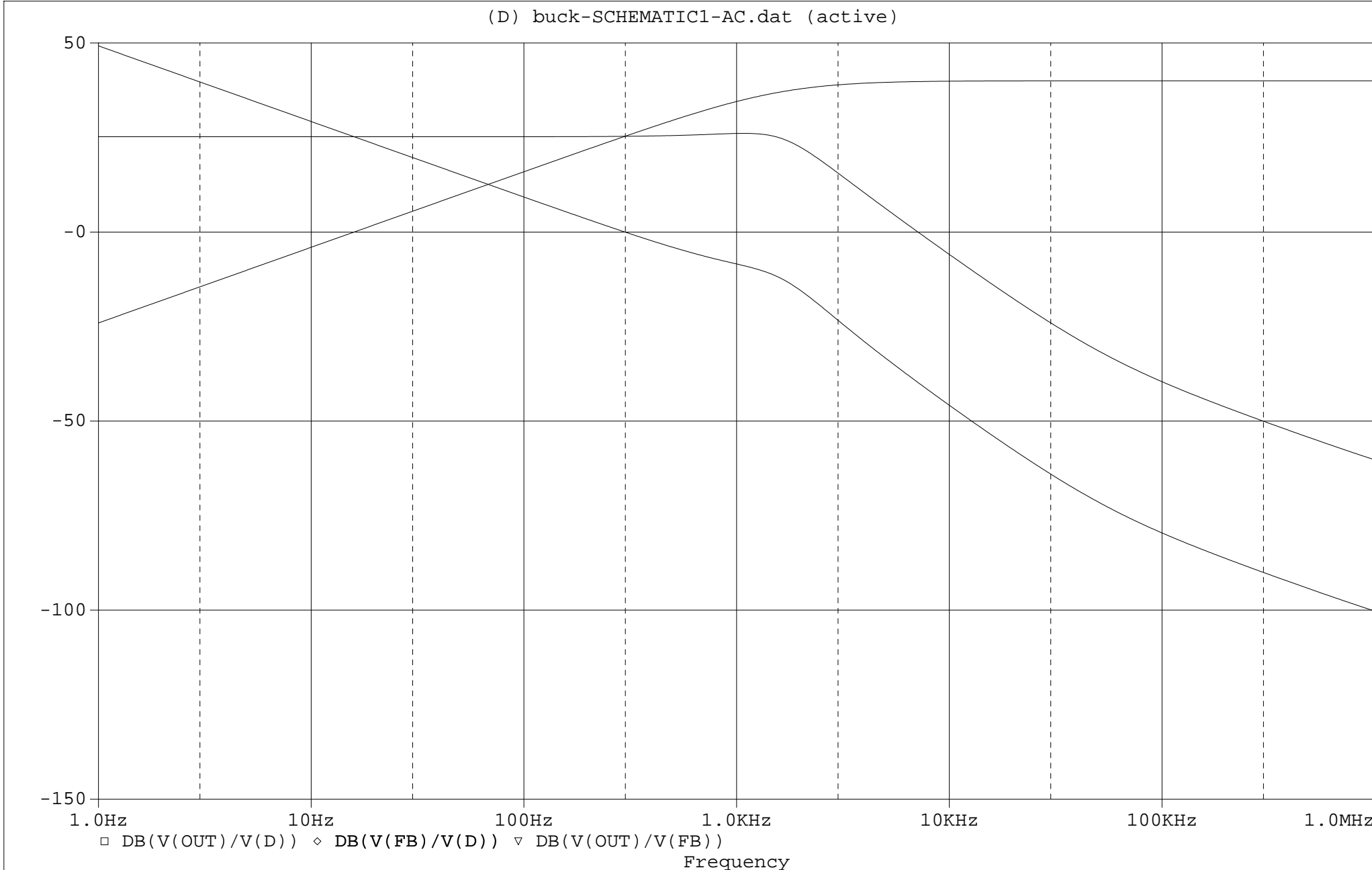


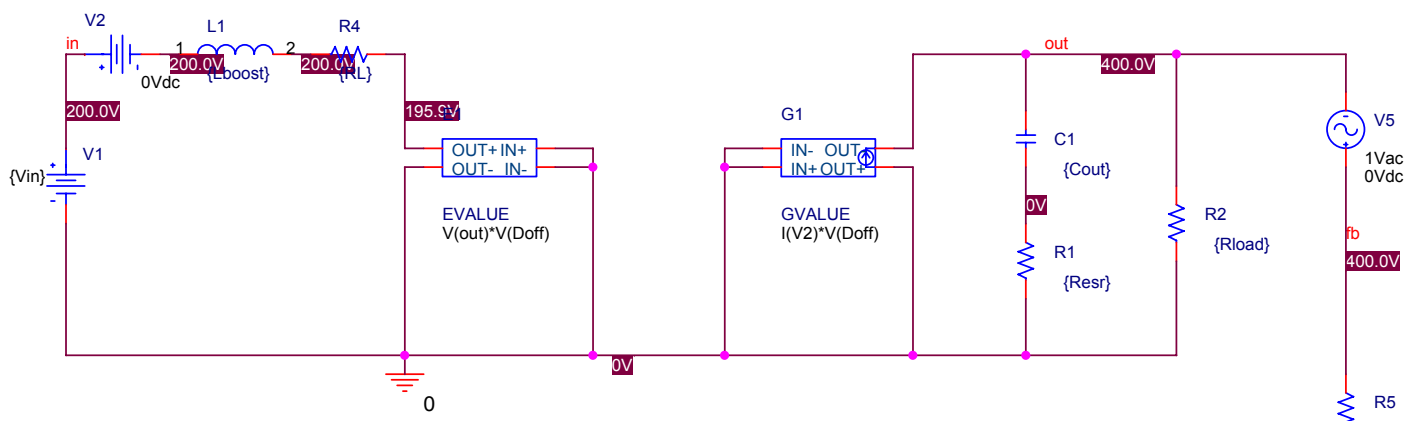
□ DB(V(OUT)/V(FB))

▽ P(V(OUT)/V(FB))-180

Frequency

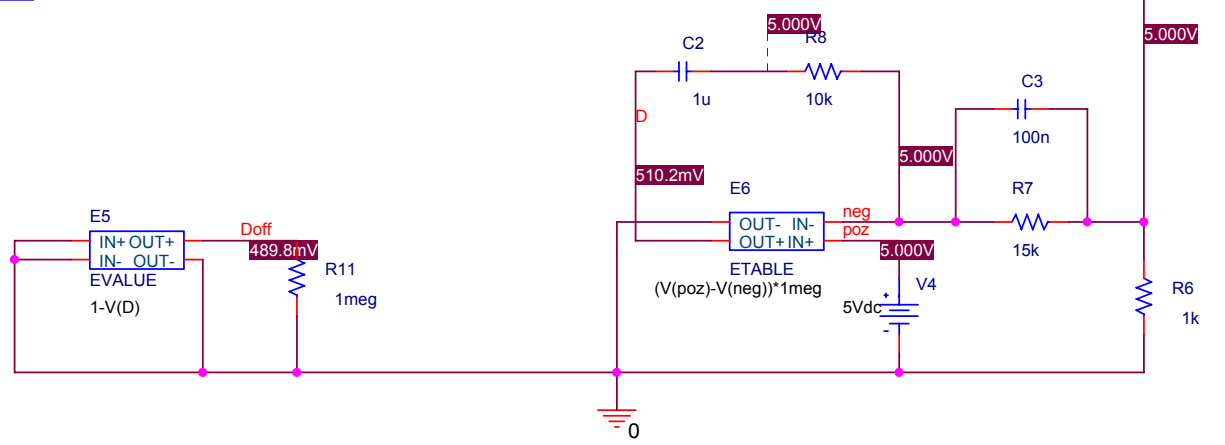
(D) buck-SCHEMATIC1-AC.dat (active)





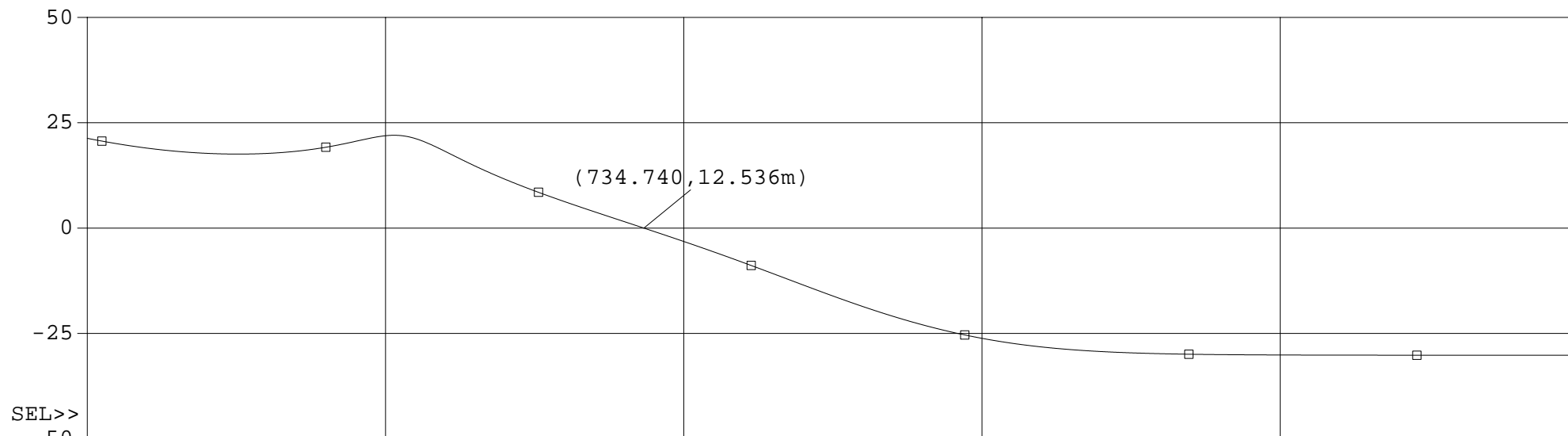
PARAMETERS:

- Lboost = 1m
- Cout = 470u
- Resr = 30m
- Rload = 100
- Vin = 200
- RL = 0.5

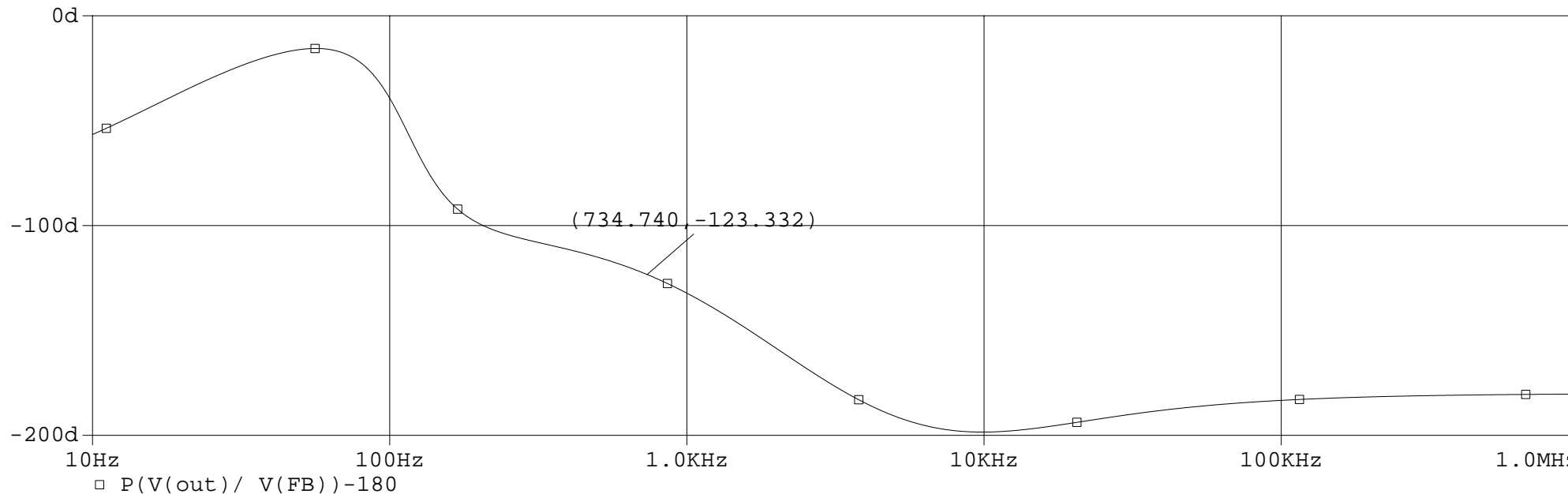


Title		
Boost converter average model		
Size	Document Number	Rev
A4	Mor M. Peretz - DCDC_04	<RevCode>
Date:	Sunday, December 21, 2003	Sheet 1 of 1

(A) boost-SCHEMATIC1-ac.dat (active)



□ DB(V(out)/ V(FB))



□ P(V(out)/ V(FB))-180

Frequency

(A) boost-SCHEMATIC1-ac.dat (active)

